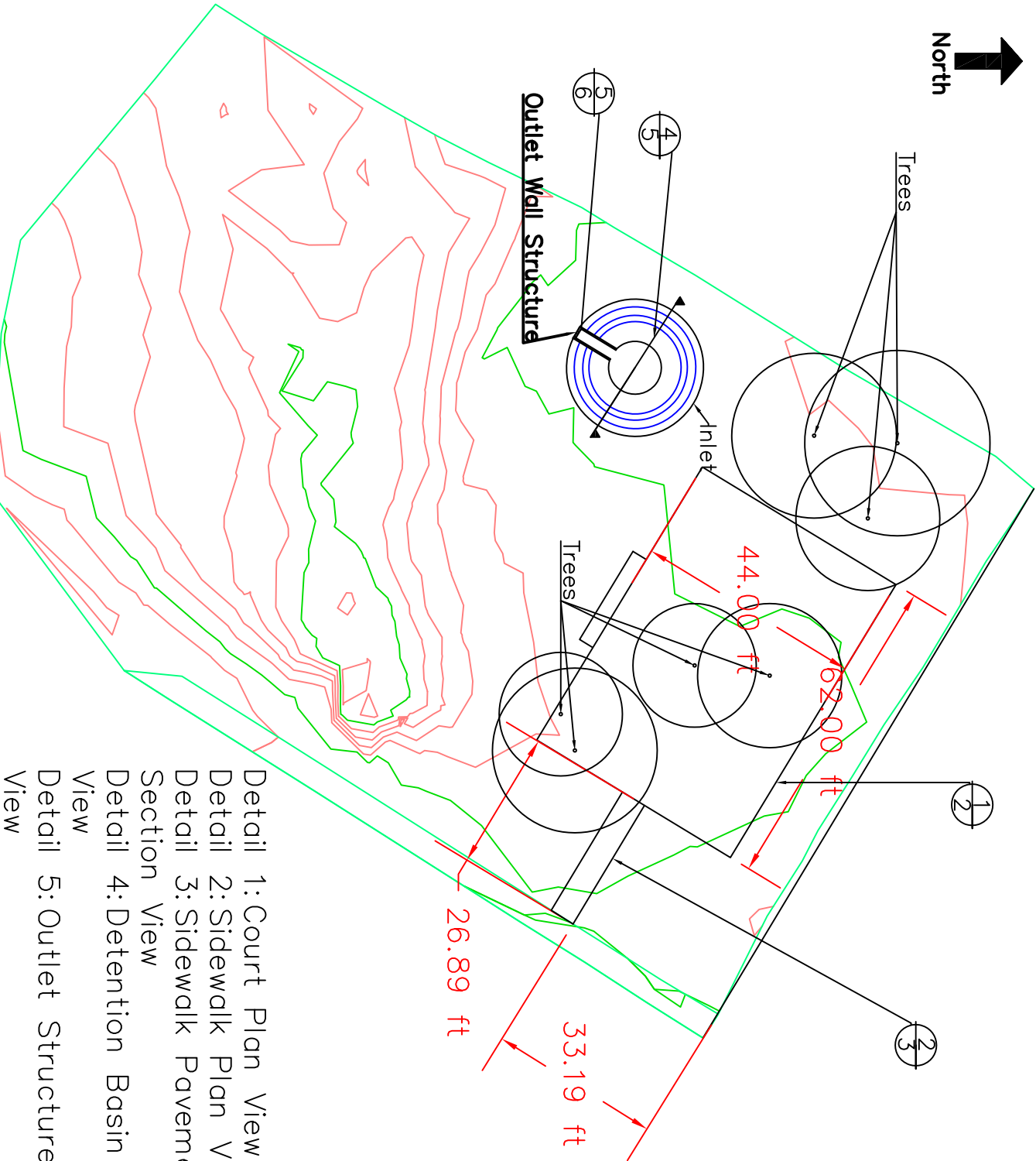
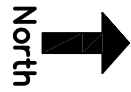
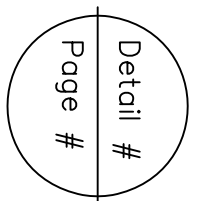


Construction Plan of The Basketball Court Design



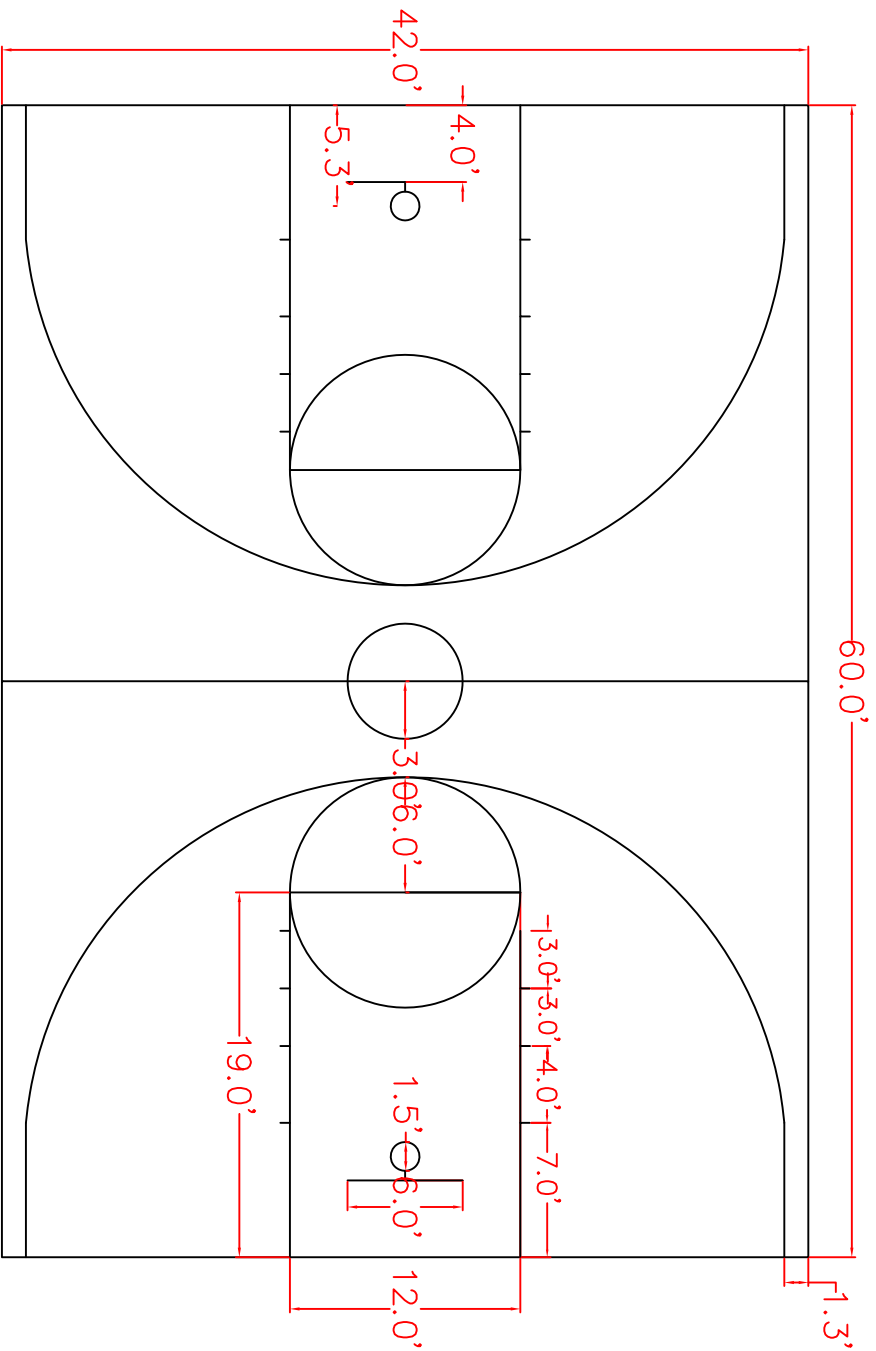
- Detail 1: Court Plan View
- Detail 2: Sidewalk Plan View
- Detail 3: Sidewalk Pavement Cross Section View
- Detail 4: Detention Basin Cross Section View
- Detail 5: Outlet Structure Wall Front View



NO.	DATE	COMMENTS



Basketball Court



Note:
The pavement design of the court is the same as the sidewalk (See detail 3).

Basketball Court Design

Court plan view

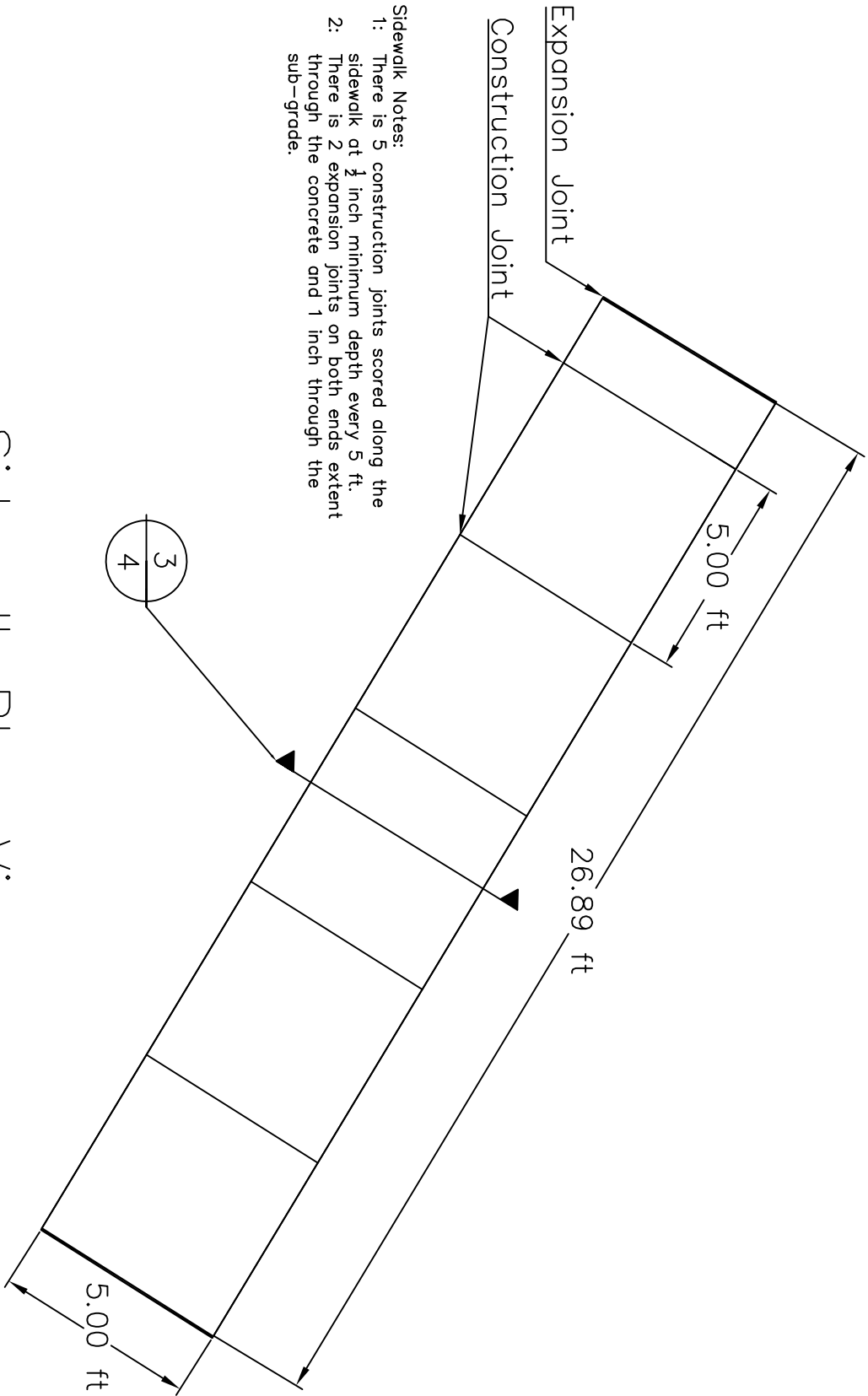
DRAWN BY: Raj Alharad
CHECKED BY: Ahmad Alharad
DATE: 11/30/2014
SCALE: 1"=10'

NO.	DATE	COMMENTS



Northern Arizona University
Department of Civil Engineering, Construction Management and Environmental Engineering



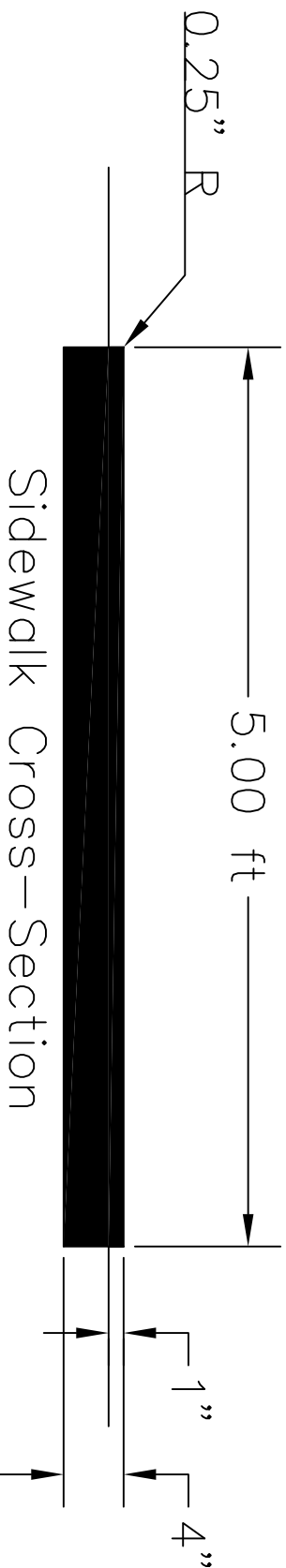


- Sidewalk Notes:
- 1: There is 5 construction joints scored along the sidewalk at $\frac{3}{4}$ inch minimum depth every 5 ft.
 - 2: There is 2 expansion joints on both ends extent through the concrete and 1 inch through the sub-grade.

Sidewalk Plan View

NO.	DATE	COMMENTS



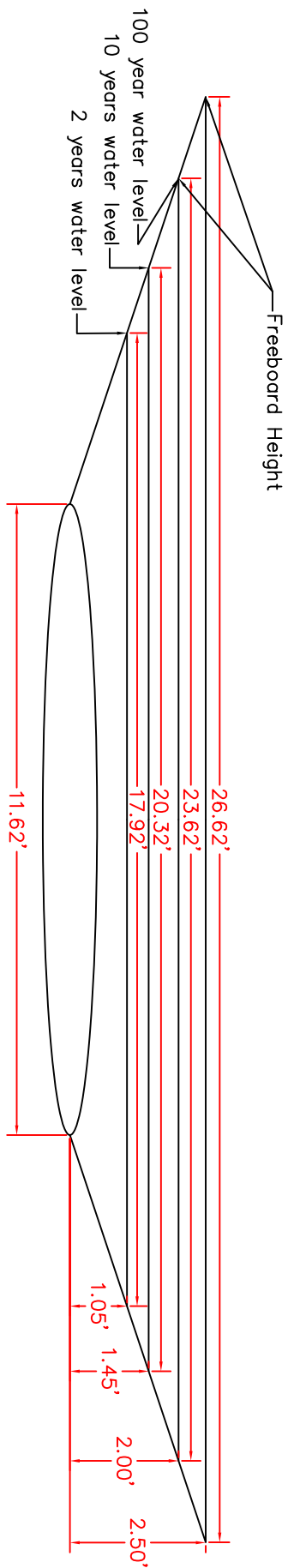


Sidewalk Cross-Section

Notes:

- 1: Thickness of the pavement is 4".
- 2: Sidewalk is 1" above the finished grade.
- 3: Radius is 0.25" at every edge between construction and expansion joints

NO.	DATE	COMMENTS



Detention Basin Cross—Section View

Basketball Court Design

Detention Basin Cross Section

DRAWN BY: *Adil Alkassar*
 CHECKED BY: *asad Alkassar*
 DATE: *11/30/2014*
 SCALE: *1"=2'*

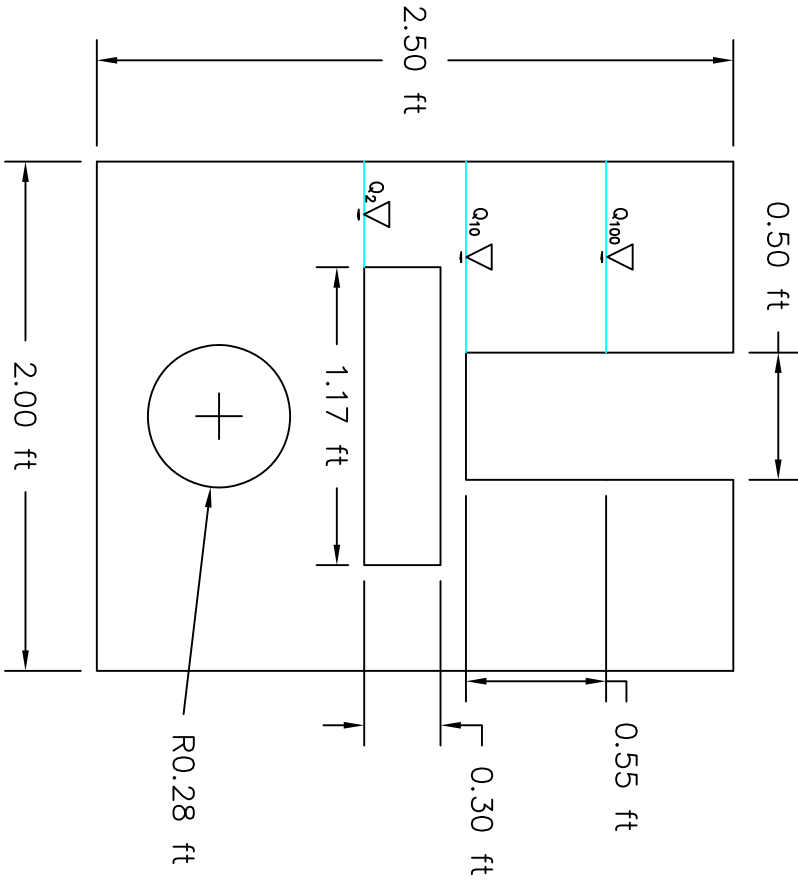
NO.	DATE	COMMENTS



Northern Arizona University
 Department of Civil Engineering, Construction
 Management and Environmental Engineering

SHEET
 5 of 6

Outlet Wall Structure Front View



NO.	DATE	COMMENTS

